

# SECTION 3 CHARTS AND DIAGRAMS

## NOTES OF SCHEMATIC DIAGRAM

### Safety precautions

The Components identified by the symbol are critical for safety. For continued safety, replace safety critical components only with manufacturer's recommended parts.

### 1. Units of components on the schematic diagram

Unless otherwise specified.

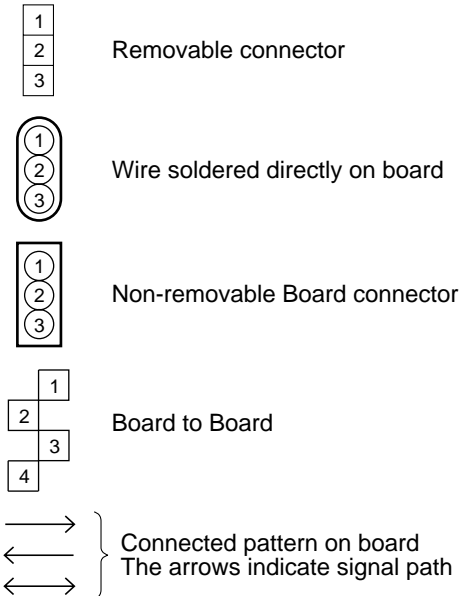
- 1) All resistance values are in ohm, 1/6 W, 1/8 W (refer to parts list).  
Chip resistors are 1/16 W.  
K: K $\Omega$  (1000 $\Omega$ ), M: M $\Omega$  (1000K $\Omega$ )
- 2) All capacitance values are in  $\mu$ F, (P: PF).
- 3) All inductance values are in  $\mu$ H, (m: mH).
- 4) All diodes are 1SS133, MA165 or 1N4148M (refer to parts list).

### 2. Indications of control voltage

AUX : Active at high

$\overline{\text{AUX}}$  or AUX(L) : Active at low

### 3. Interpreting Connector indications



### 4. Voltage measurement

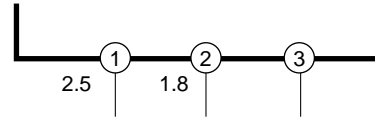
#### 1) Video circuits

Voltage are DC-measured (reference to ground) with a voltmeter by supplying the color bar signal during print screen mode.

— : Unmeasurable or unnecessary to measure

#### 2) Indication on schematic diagram

Voltage indications on the schematic diagram are as shown below.



**Note: If the voltages are not indicated on the schematic diagram, refer to the voltage charts.**

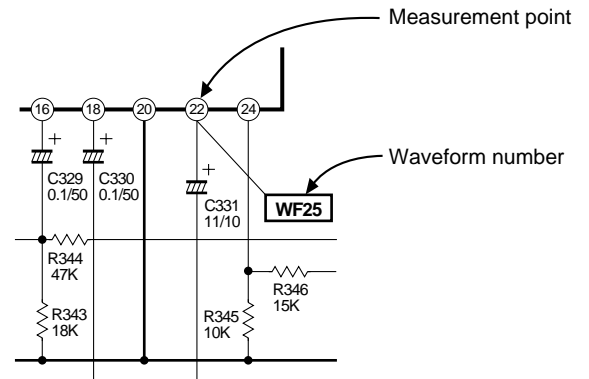
### 5. Waveform measurement

#### 1) Video circuits

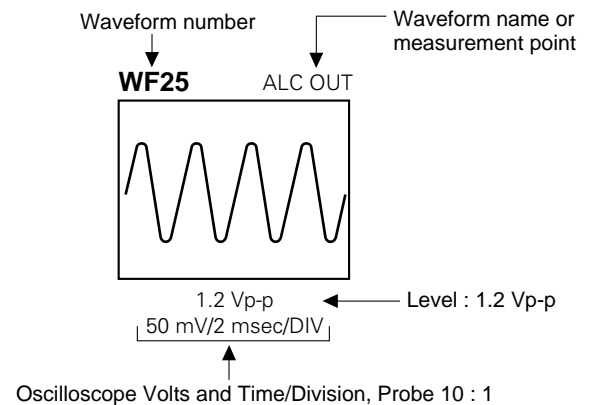
Waveforms are measured (reference to ground) with a color bar signal during print screen mode.

#### 2) Indication on schematic diagram

Waveform indications on the schematic diagram are as shown below.

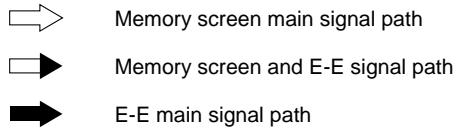


#### 3) Waveform indications

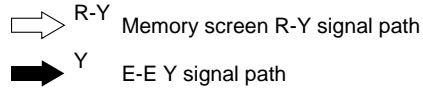


## 6. Signal path Symbols

The arrows indicate the signal path as follows.

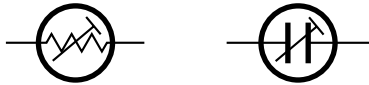


(Example)



## 7. Indication of the parts for adjustments

The parts for the adjustments are surrounded with the circle as shown below.



## 8. Indication of the parts not mounted on the circuit board

"OPEN" is indicated by the parts not mounted on the circuit board.



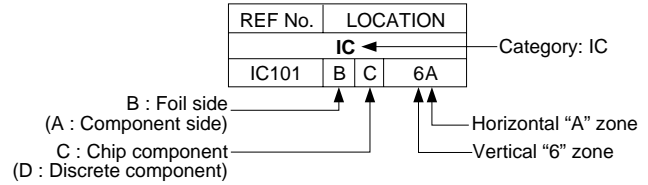
## CIRCUIT BOARD NOTES

### 1. Foil and Component sides

- 1) Foil side (B side) :  
Parts on the foil side seen from foil face (pattern face) are indicated.
- 2) Component side (A side) :  
Parts on the component side seen from component face (parts face) indicated.

### 2. Parts location guides

Parts location are indicated by guide scale on the circuit board.

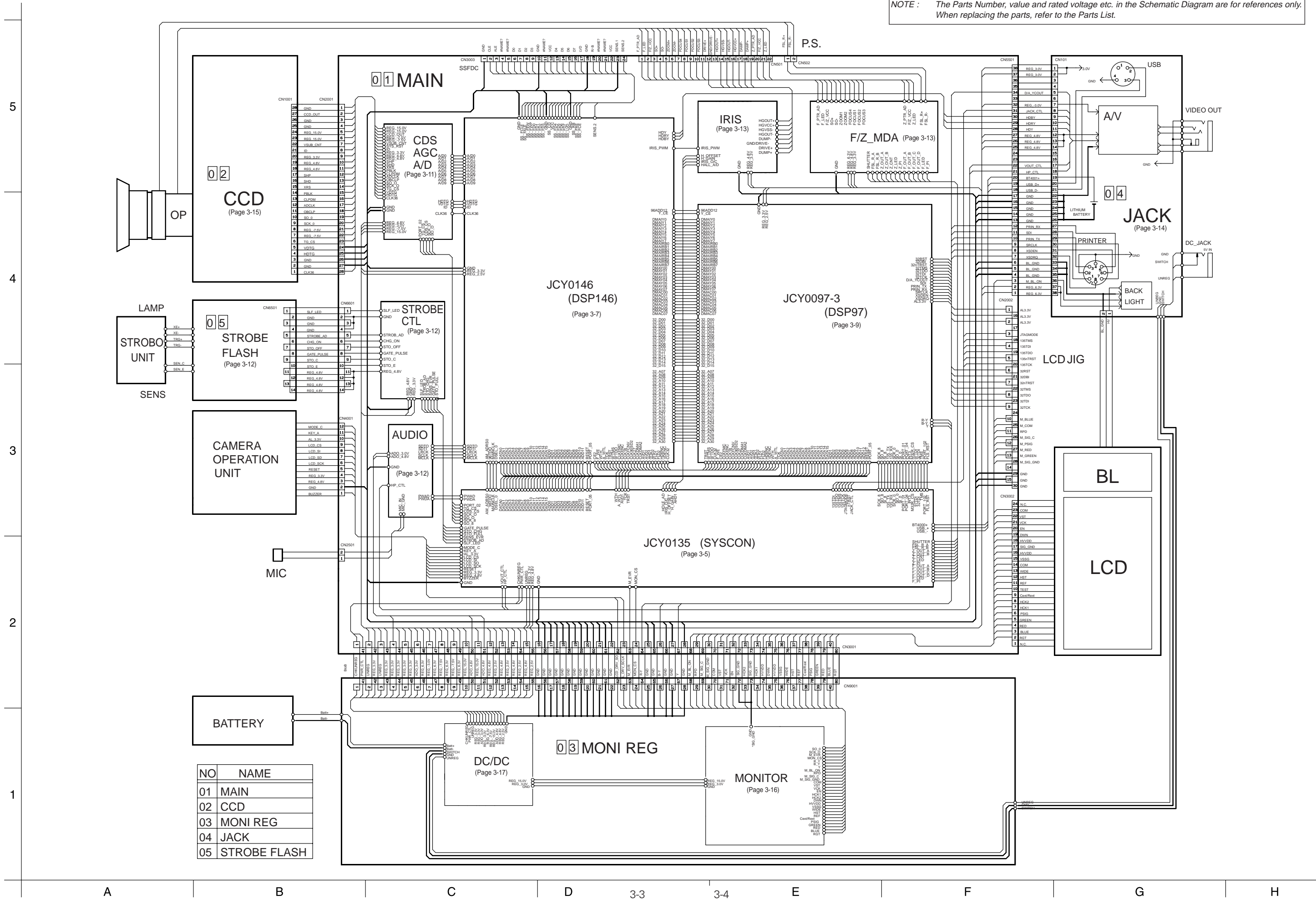


### Note:

**For general information in service manual, please refer to the Service Manual of GENERAL INFORMATION Edition 4 No. 82054D (January 1994).**

3.1 BOARD INTERCONNECTION

NOTE : The Parts Number, value and rated voltage etc. in the Schematic Diagram are for references only. When replacing the parts, refer to the Parts List.



3.2 MAIN (SYSCON) SCHEMATIC DIAGRAM

NOTE : The Parts Number, value and rated voltage etc. in the Schematic Diagram are for references only. When replacing the parts, refer to the Parts List.

0 1 MAIN (SYSCON)

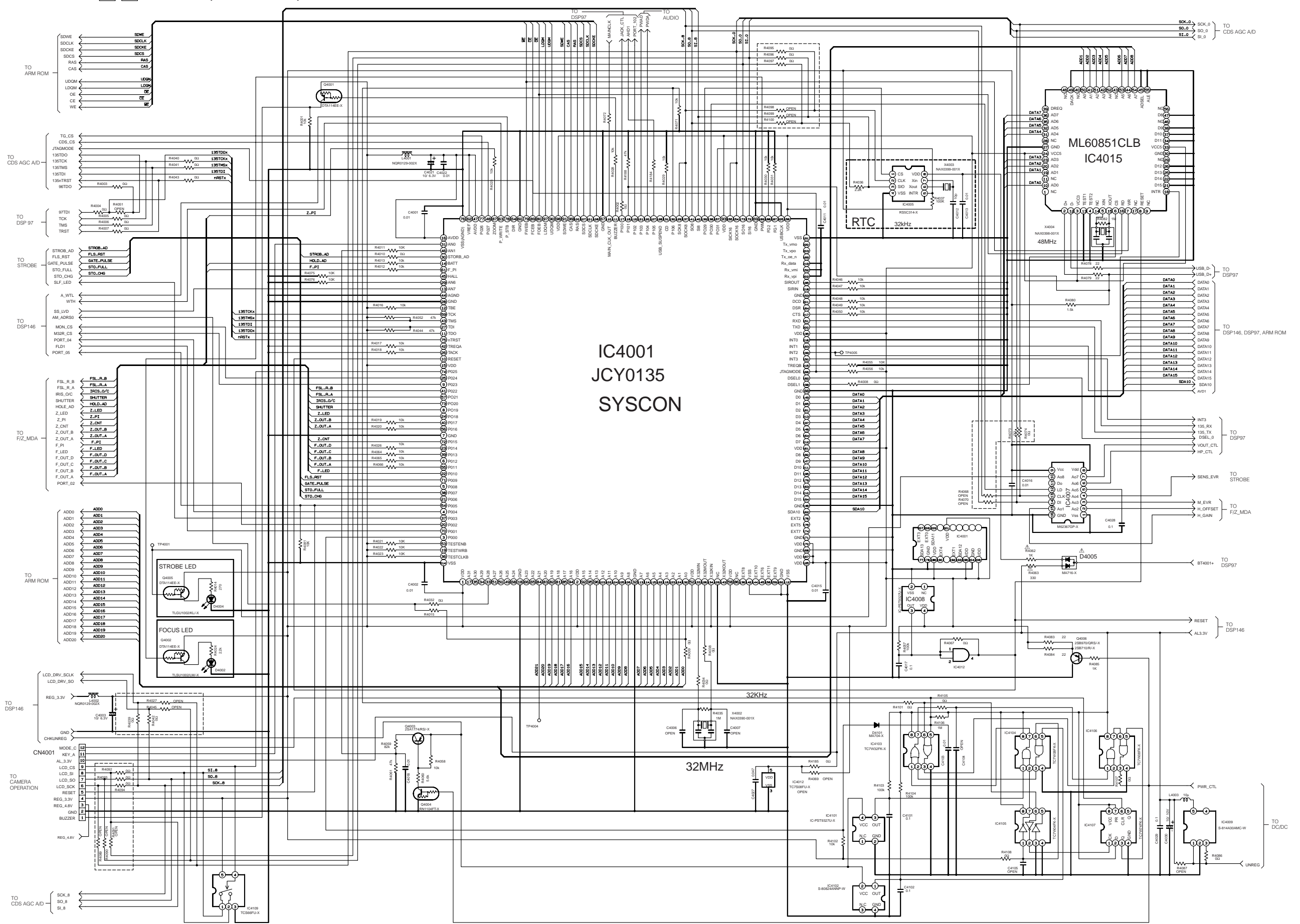
5

4

3

2

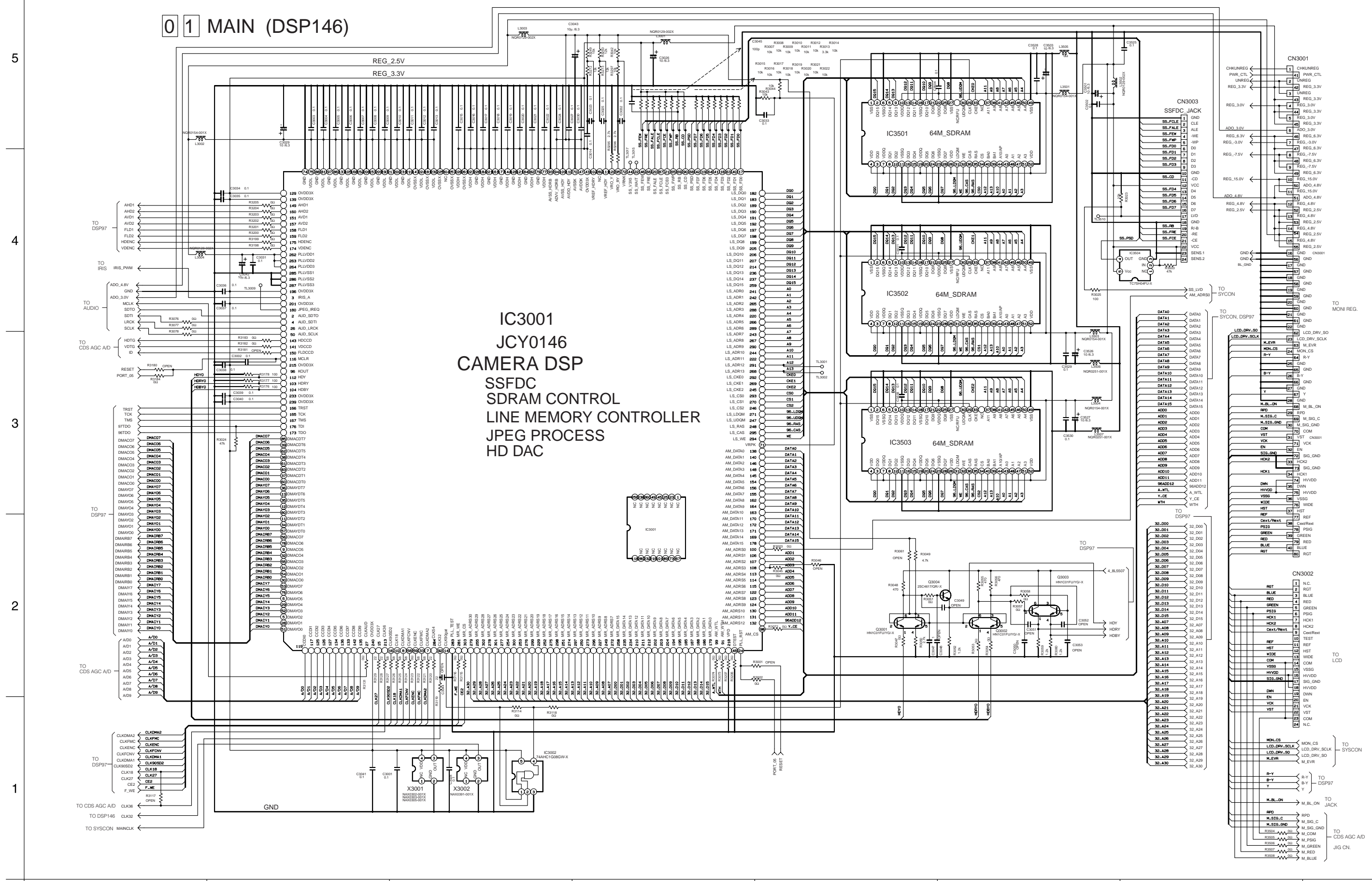
1



3.3 MAIN (DSP146) SCHEMATIC DIAGRAM

NOTE : The Parts Number, value and rated voltage etc. in the Schematic Diagram are for references only. When replacing the parts, refer to the Parts List.

0 1 MAIN (DSP146)



IC3001  
JCY0146  
CAMERA DSP  
SSFDC  
SDRAM CONTROL  
LINE MEMORY CONTROLLER  
JPEG PROCESS  
HD DAC

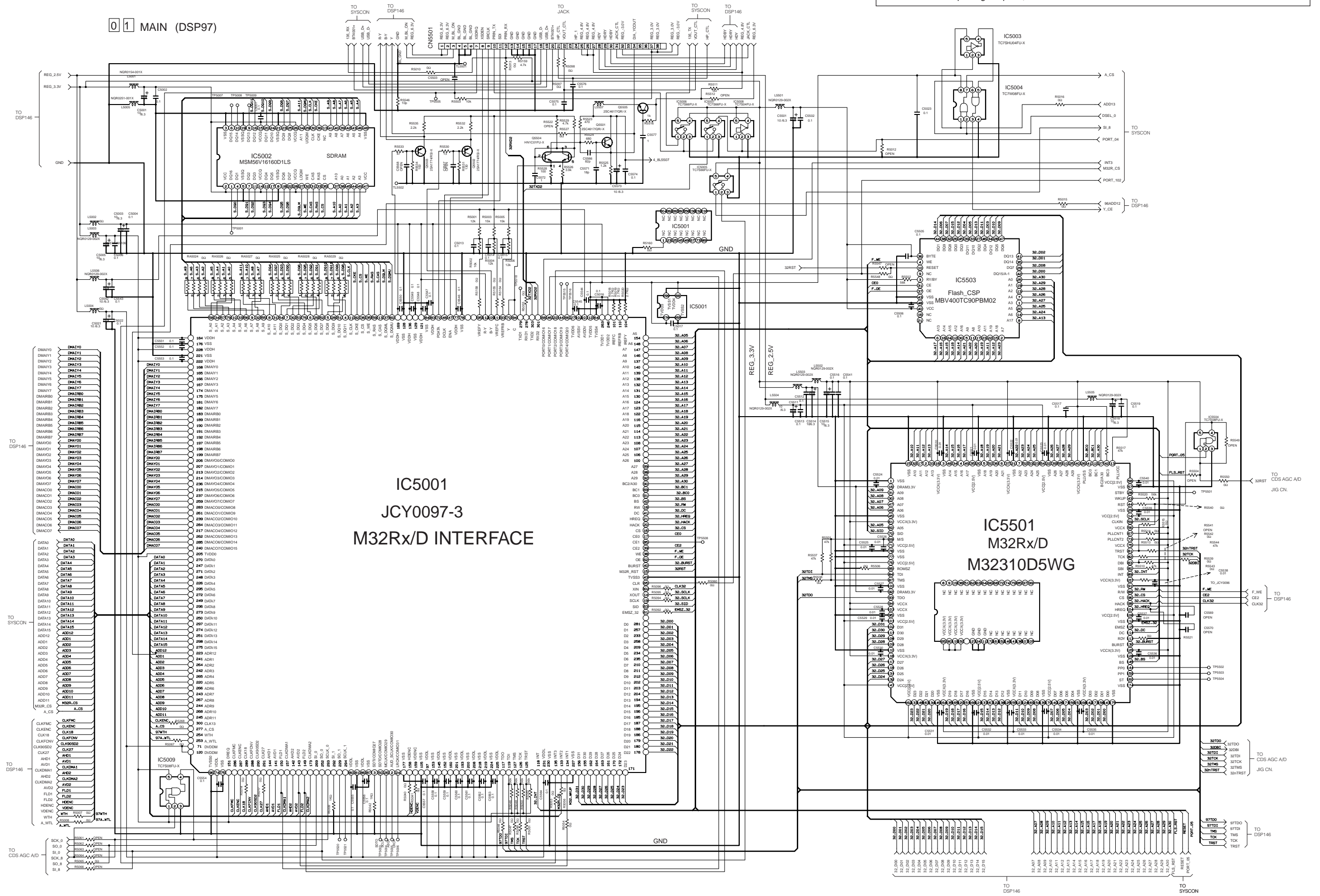
5  
4  
3  
2  
1

A B C D E F G H

3.4 MAIN (DSP97) SCHEMATIC DIAGRAM

NOTE : The Parts Number, value and rated voltage etc. in the Schematic Diagram are for references only. When replacing the parts, refer to the Parts List.

01 MAIN (DSP97)



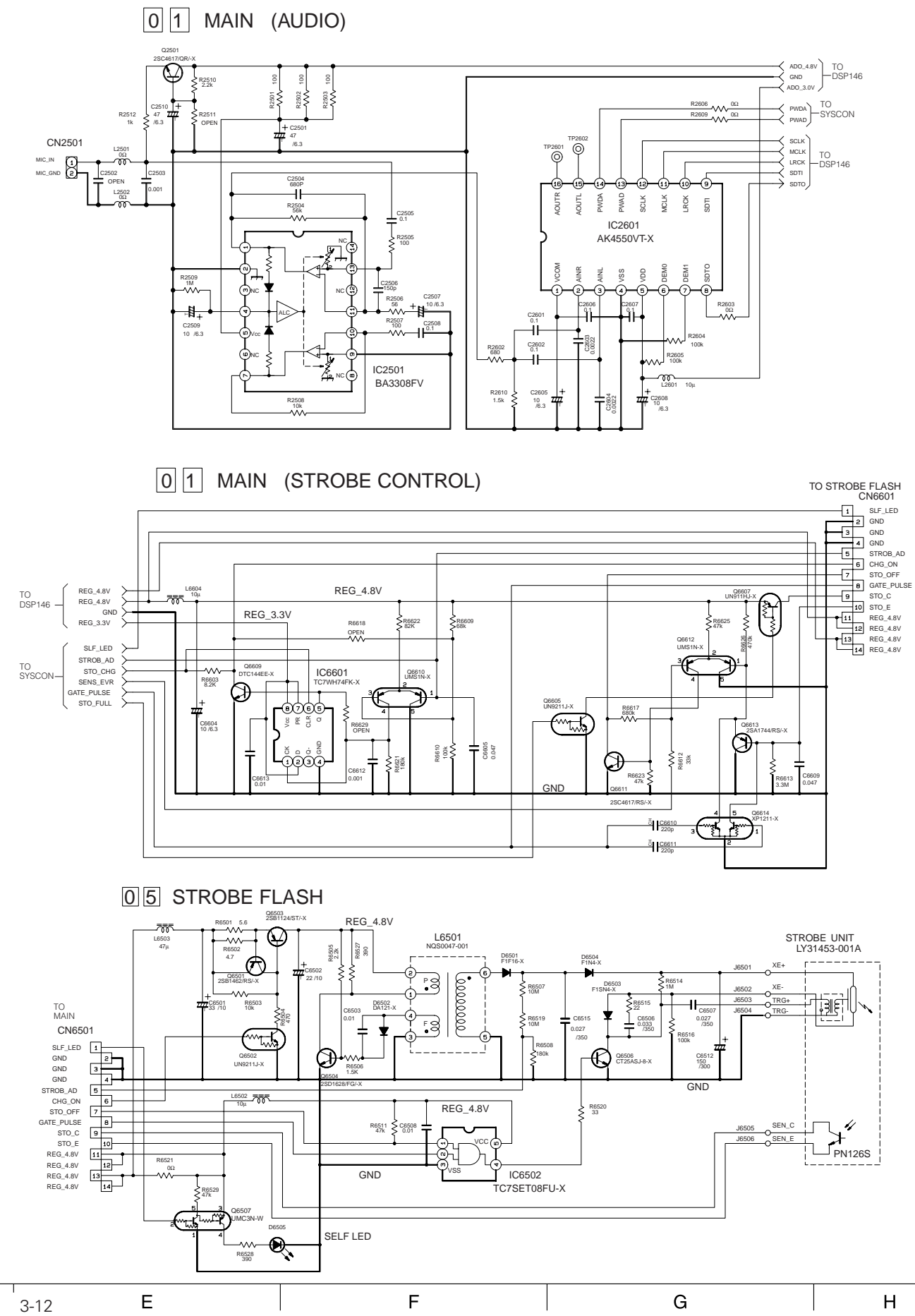
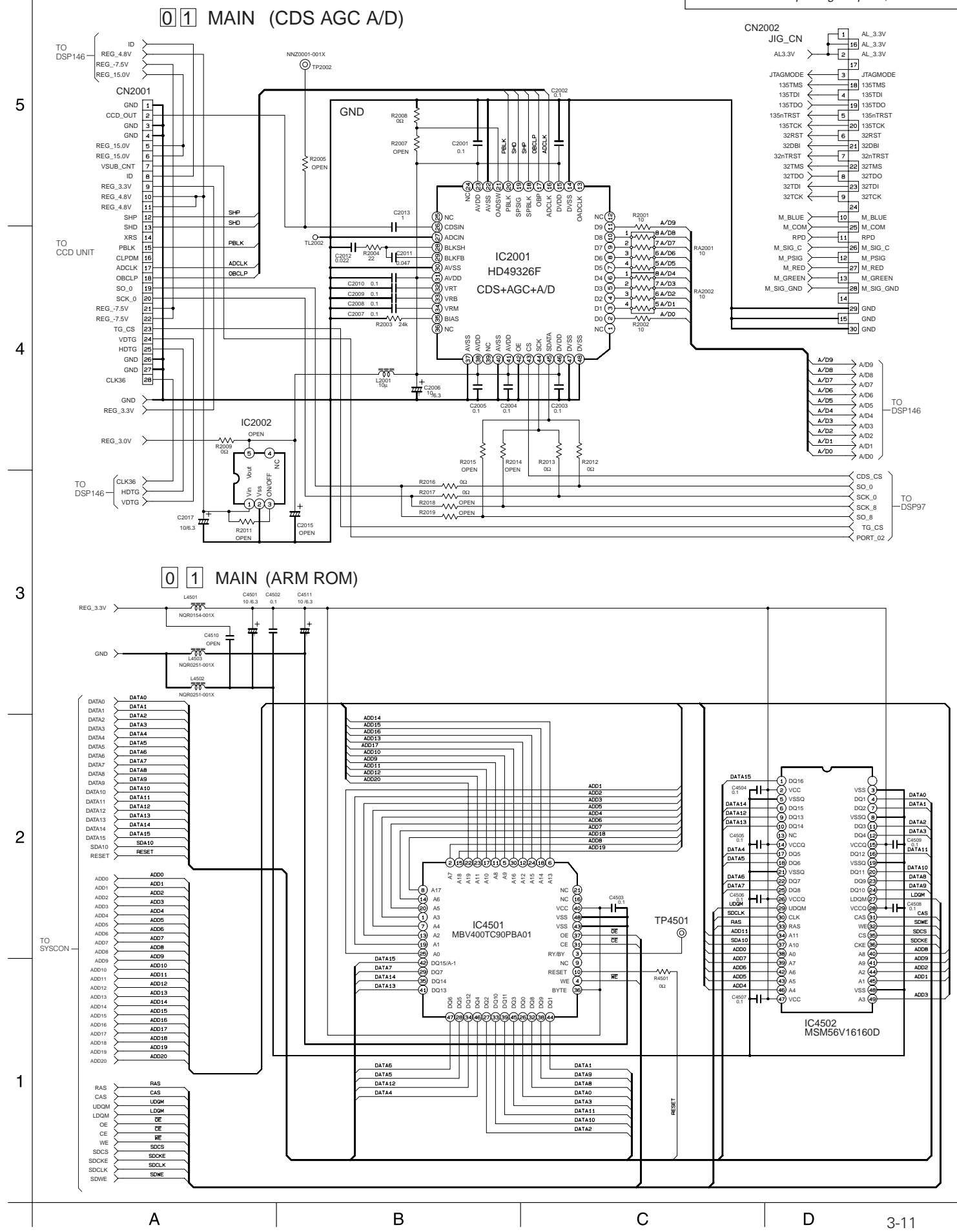
5  
4  
3  
2  
1

A B C D 3-9 3-10 E F G H

### 3.5 MAIN (CDS AGC A/D AND ARM ROM) SCHEMATIC DIAGRAM

### 3.6 MAIN (STROBE CONTROL AND AUDIO) AND STROBE FLASH SCHEMATIC DIAGRAM

NOTE : The Parts Number, value and rated voltage etc. in the Schematic Diagram are for references only. When replacing the parts, refer to the Parts List.



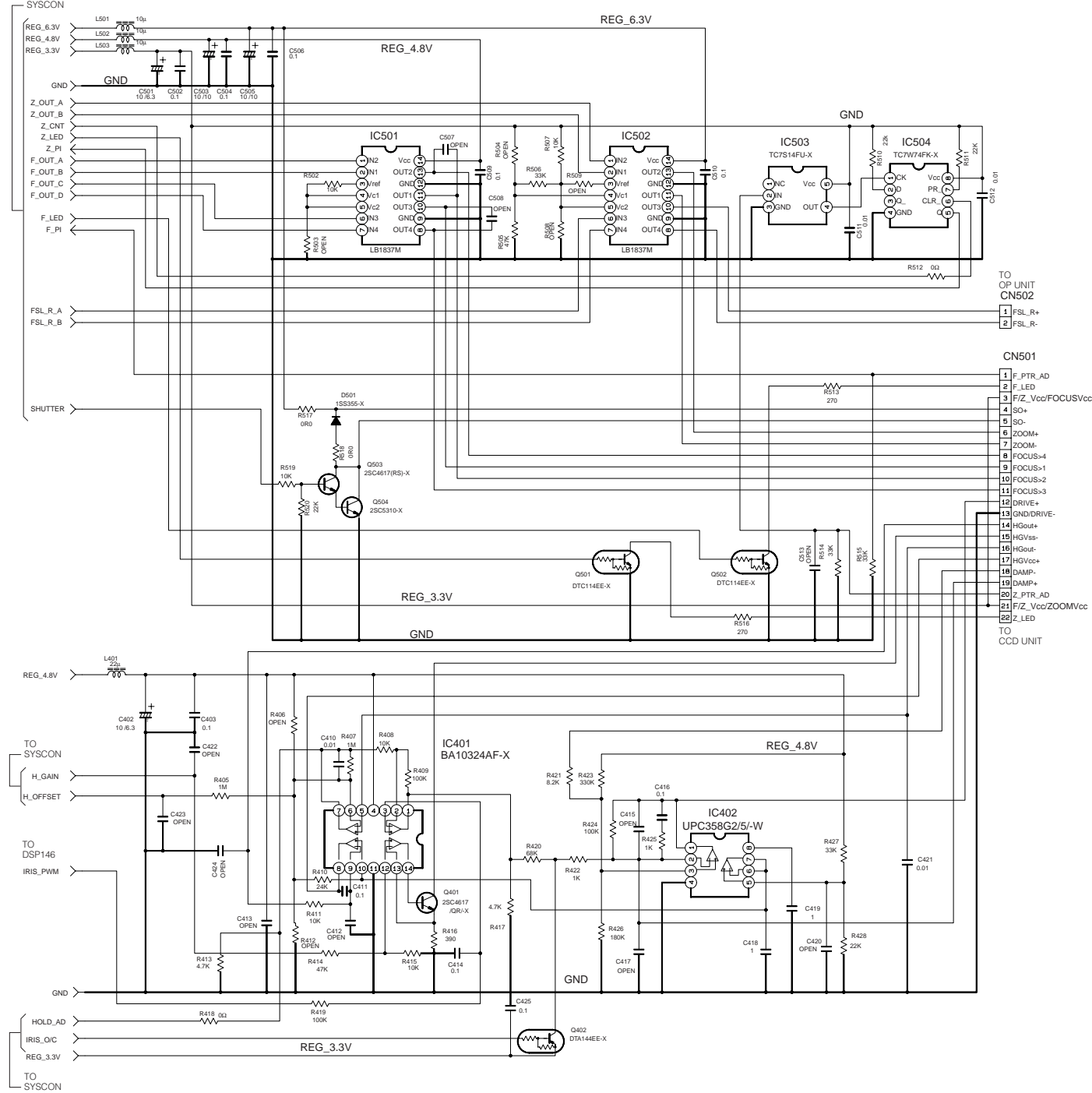
3.7 MAIN (F/Z\_MDA / IRIS) SCHEMATIC DIAGRAM

3.8 JACK (VIDEO OUT/USB/PRINTER/DC JACK/MONITOR BACK LIGHT) SCHEMATIC DIAGRAM

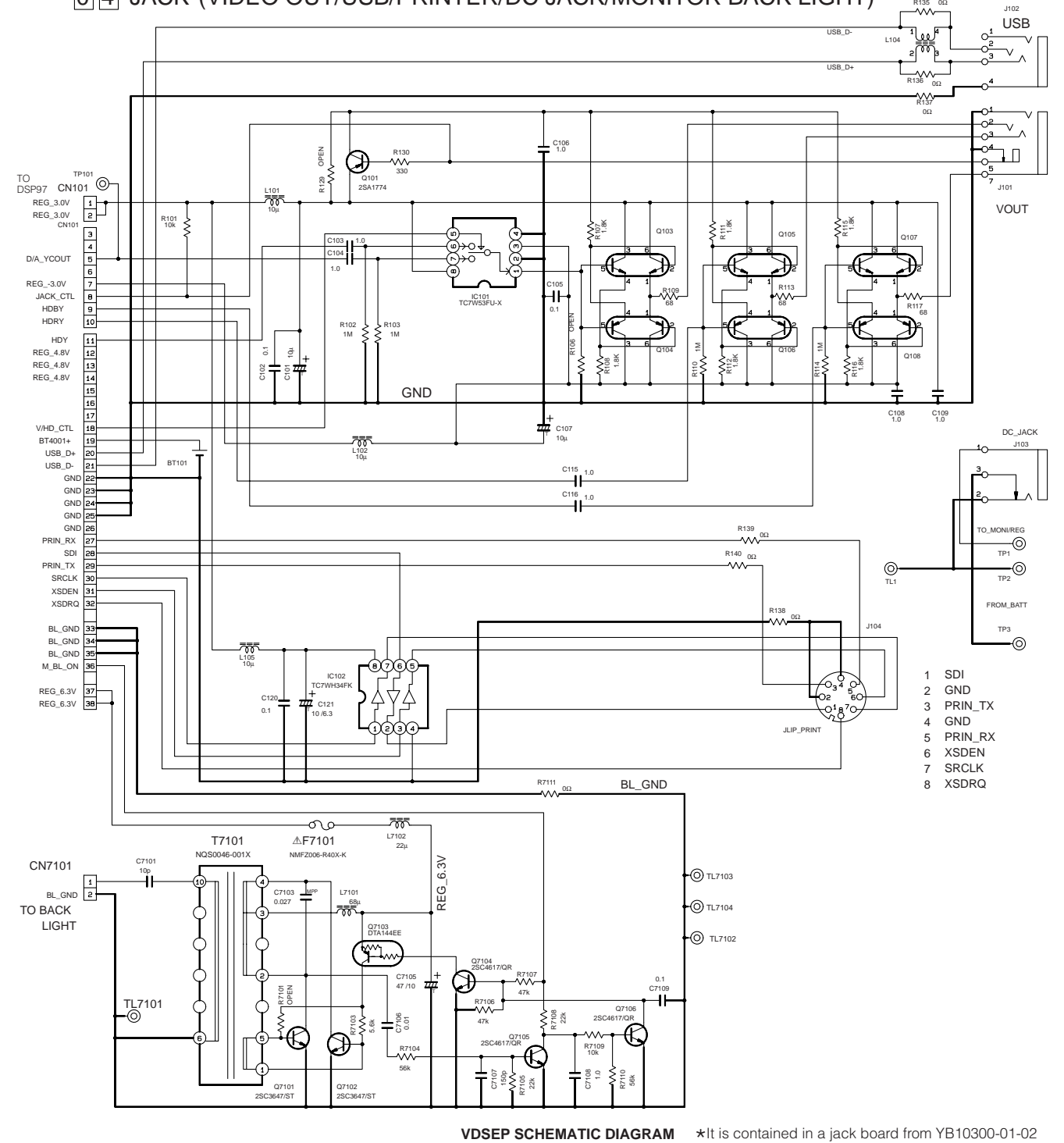
NOTE : The Parts Number, value and rated voltage etc. in the Schematic Diagram are for references only. When replacing the parts, refer to the Parts List.

5  
4  
3  
2  
1

01 MAIN (F/Z\_MDA / IRIS)



04 JACK (VIDEO OUT/USB/PRINTER/DC JACK/MONITOR BACK LIGHT)

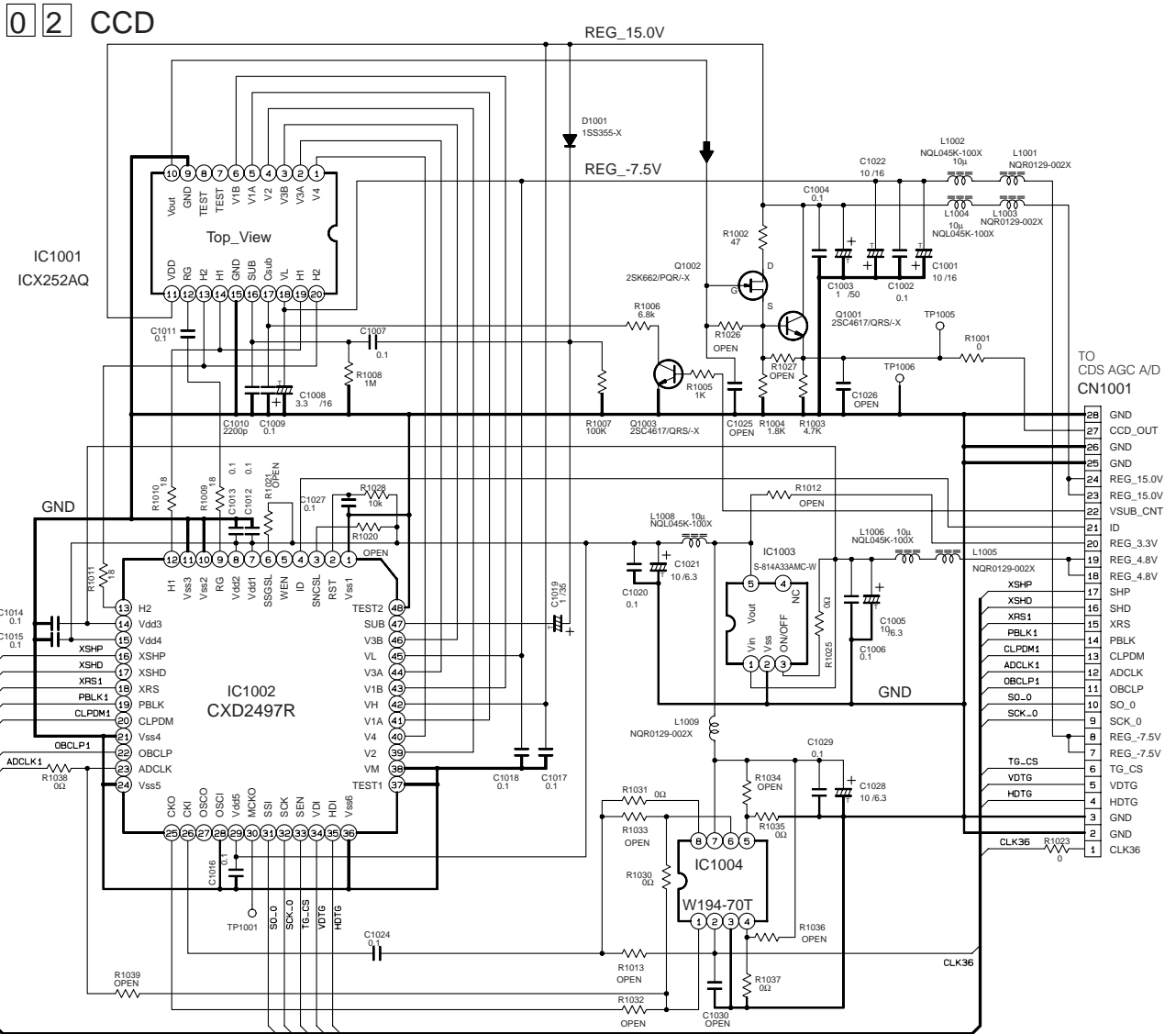


A B C D 3-13 3-14 E F G H



### 3.9 CCD SCHEMATIC DIAGRAM

**NOTE :** The Parts Number, value and rated voltage etc. in the Schematic Diagram are for references only. When replacing the parts, refer to the Parts List.

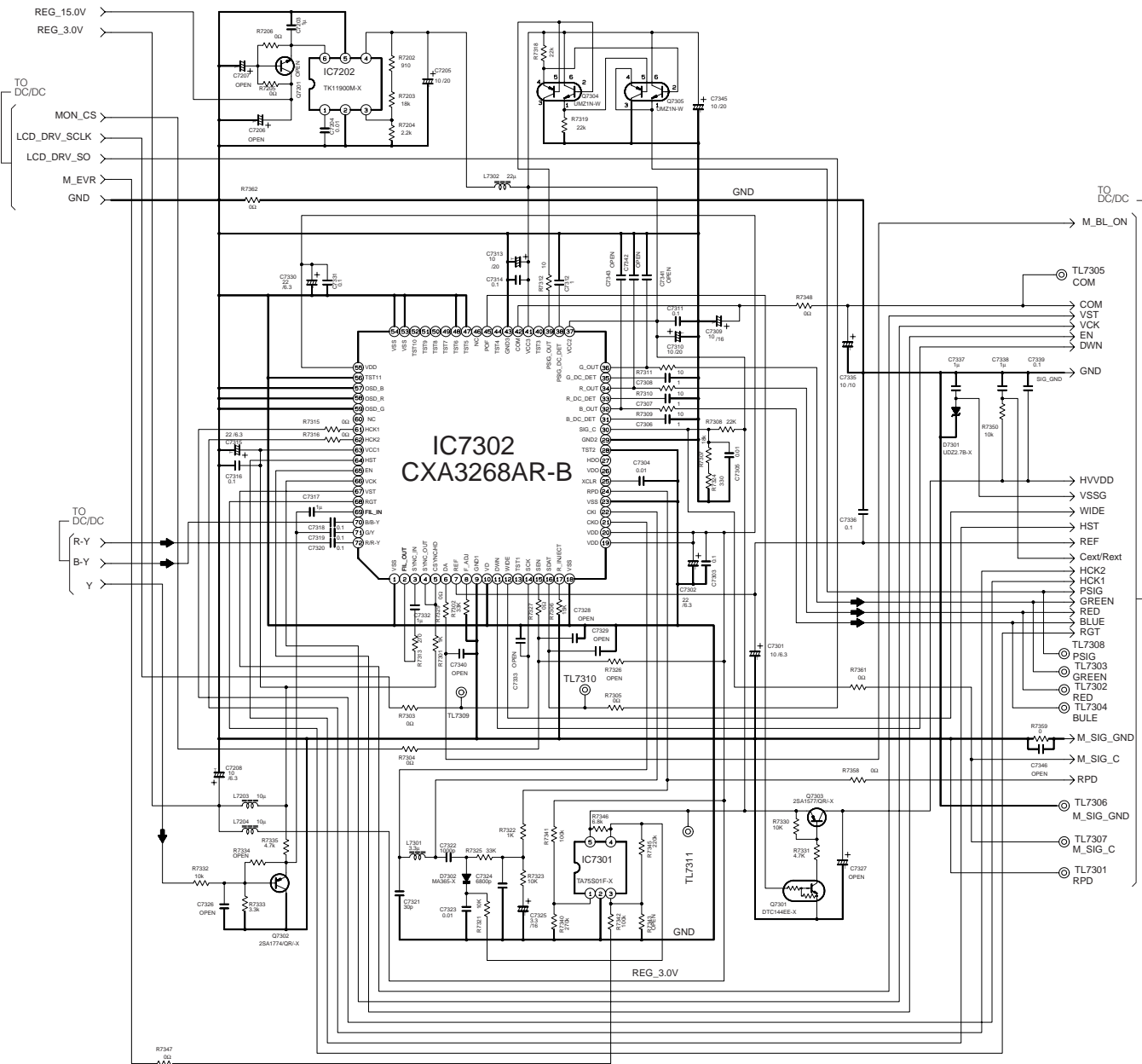


### 3.10 MONI REG (MONITOR) SCHEMATIC DIAGRAMS

**NOTE :** The Parts Number, value and rated voltage etc. in the Schematic Diagram are for references only. When replacing the parts, refer to the Parts List.

5  
4  
3  
2  
1

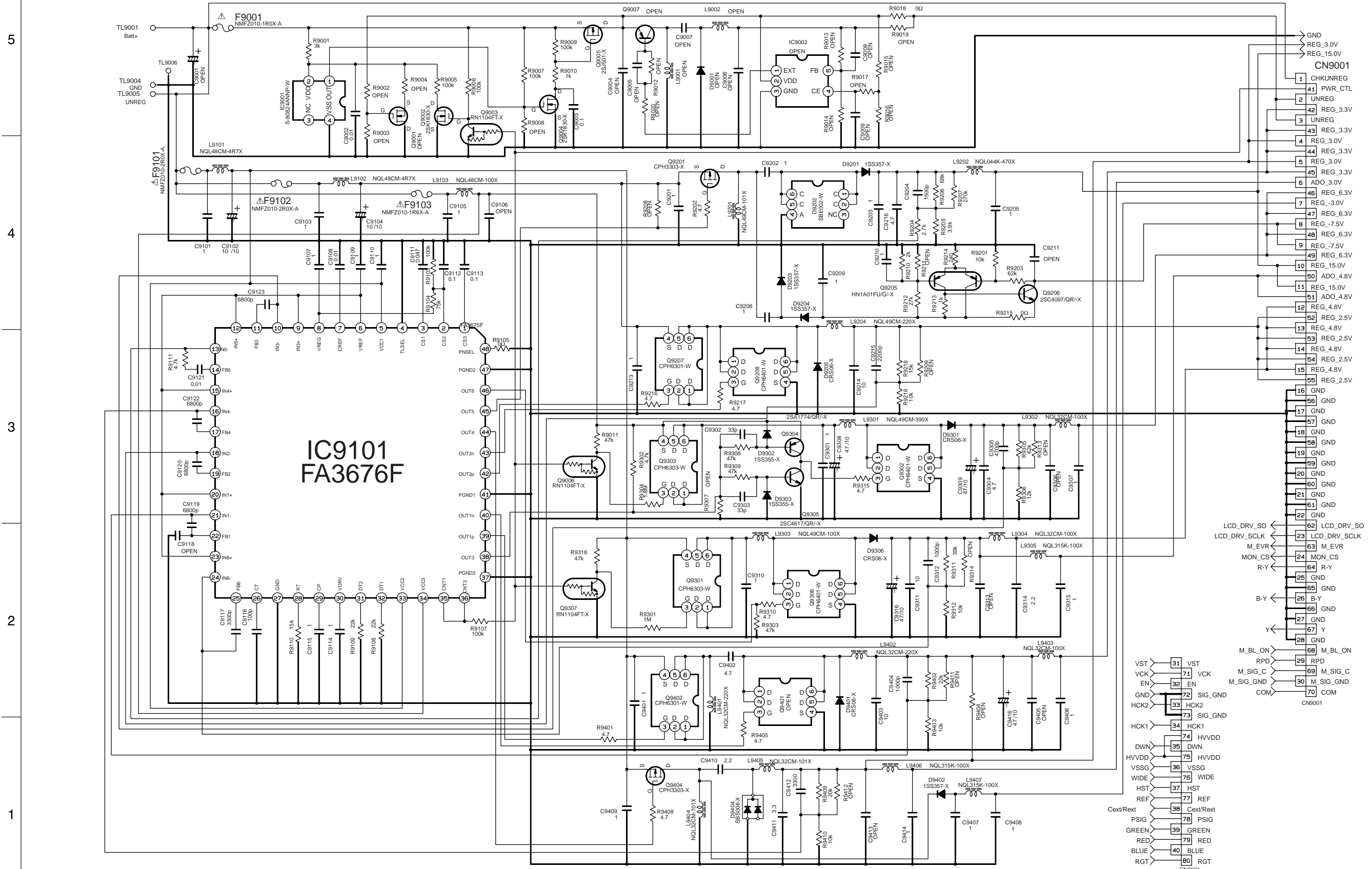
03 MONI REG (MONITOR)



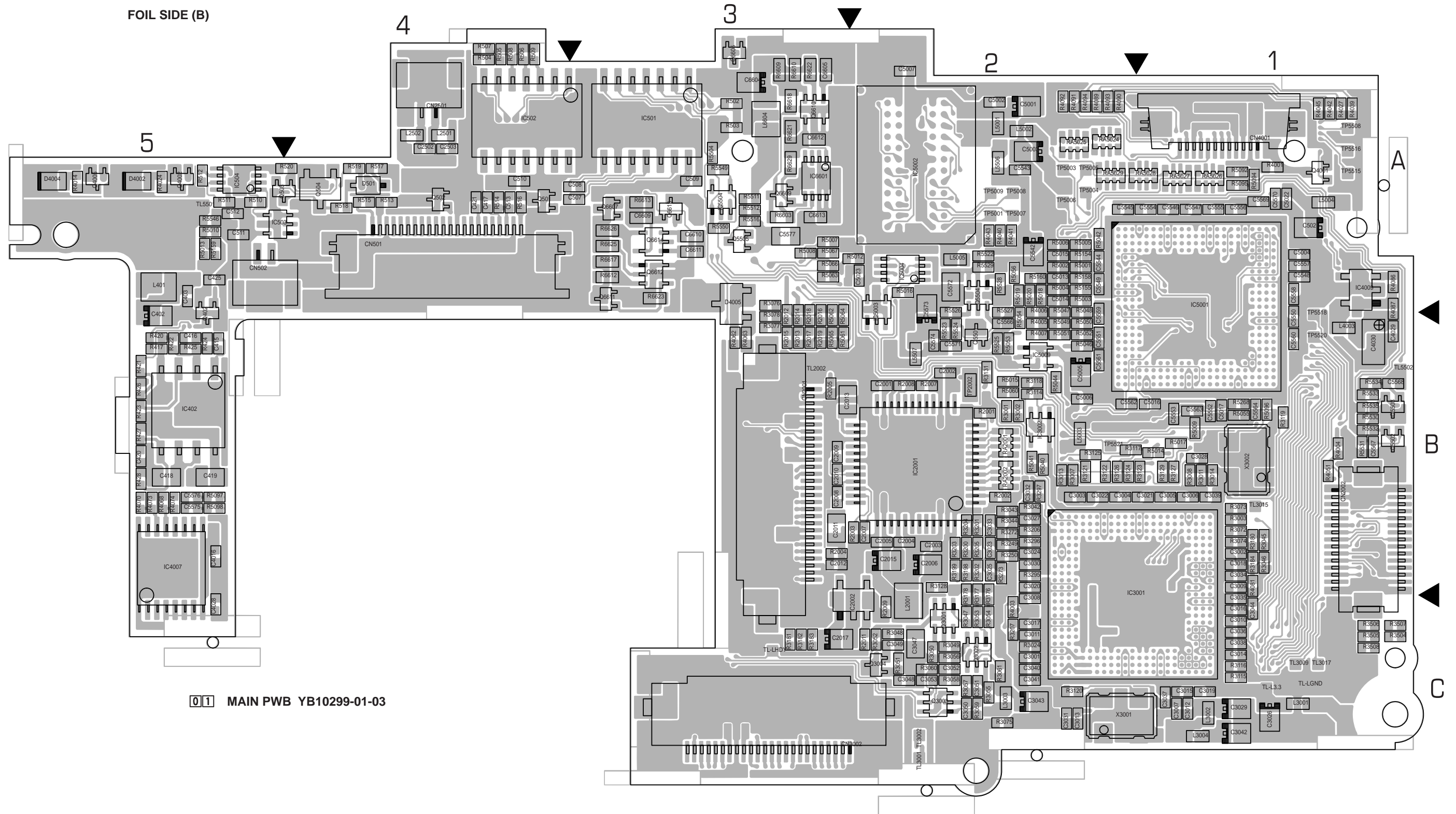
3.11 MONITOR REG (DC/DC) SCHEMATIC DIAGRAMS

NOTE : The Parts Number, value and rated voltage etc. in the Schematic Diagram are for references only. When replacing the parts, refer to the Parts List.

03 MONI REG (DC/DC)



3.12 MAIN CIRCUIT BOARD



COMPONENT PARTS LOCATION GUIDE <MAIN > YB10299-01-03

REF.NO.	LOCATION	REF.NO.	LOCATION	REF.NO.	LOCATION	REF.NO.	LOCATION	REF.NO.	LOCATION	REF.NO.	LOCATION
<b>CAPACITOR</b>											
C402	B C 5B	C3024	B C 2B	C5023	B C 2A	CN5501	A C 5B	L5005	B C 2A		
C403	B C 5A	C3025	B C 2B	C5501	A C 1B	CN6601	A C 3A	L5501	A C 1B		
C410	A C 4A	C3026	B C 1C	C5502	A C 1B	<b>DIODE</b>					
C411	A C 5A	C3027	B C 2B	C5503	A C 5A	D501	B C 4A	L5503	A C 1A		
C412	A C 5A	C3028	B C 1B	C5505	A C 1B	D4002	B C 5A	L5504	A C 1A		
C413	A C 4A	C3029	B C 1C	C5506	A C 1B	D4004	B C 1E	L5505	A C 1A		
C414	A C 4A	C3030	B C 2B	C5511	A C 1A	D4004	B C 5A	L5506	B C 2A		
C415	B C 5B	C3031	B C 2C	C5512	A C 1A	D4005	B C 3A	L5507	B C 2B		
C416	B C 5B	C3032	B C 2B	C5513	A C 1A	D4101	A C 2A	L6604	B C 3A		
C417	B C 4A	C3033	B C 2B	C5514	A C 1A	<b>TRANSISTOR</b>					
C418	B C 5B	C3034	B C 1B	C5515	A C 1A	<b>IC</b>					
C419	B C 5B	C3035	B C 1C	C5516	A C 1A	IC401	A C 4A	Q401	A C 5A		
C420	B C 5B	C3036	B C 1C	C5517	A C 1A	IC402	B C 5B	Q402	B C 5B		
C421	B C 4A	C3037	B C 1C	C5518	A C 1A	IC501	B C 3A	Q501	B C 4A		
C422	A C 5A	C3038	B C 1C	C5519	A C 1A	IC502	B C 4A	Q502	B C 4A		
C423	A C 4A	C3039	B C 1B	C5520	A C 1B	IC503	B C 5A	Q503	B C 4A		
C424	A C 5A	C3040	B C 2C	C5521	A C 1B	IC504	B C 5A	Q504	B C 4A		
C425	B C 5A	C3041	B C 2C	C5522	A C 1A	IC2001	B C 2B	Q2501	A C 3A		
C501	A C 5A	C3042	B C 1C	C5523	A C 1A	IC2002	B C 2C	Q3001	B C 2C		
C502	A C 5A	C3043	B C 2C	C5524	A C 1B	IC2501	A C 4A	Q3002	B C 2C		
C503	A C 5A	C3044	B C 1C	C5525	A C 1B	IC2601	A C 4A	Q3003	B C 2C		
C504	A C 5A	C3045	A C 3A	C5526	A C 1B	IC3001	B C 1C	Q4001	B C 1A		
C505	A C 1E	C3047	B C 2C	C5527	A C 1B	IC3002	B C 2B	Q4002	B C 5A		
C505	A C 5A	C3048	B C 2C	C5528	A C 1B	IC3501	A C 2C	Q4003	A C 1A		
C506	A C 1E	C3049	B C 2C	C5529	A C 1B	IC3502	A C 2C	Q4004	A C 2A		
C506	A C 5A	C3050	B C 2C	C5530	A C 1B	IC3503	A C 2B	Q4005	A C 1E		
C507	B C 3A	C3051	B C 2C	C5531	A C 2B	IC3504	A C 2A	Q4005	B C 5A		
C508	B C 3A	C3052	B C 2C	C5532	A C 2B	IC4001	A C 2A	Q4006	A C 3B		
C509	B C 3A	C3053	B C 2C	C5533	A C 2A	IC4005	A C 3B	Q5501	A C 2B		
C510	B C 4A	C3501	A C 1A	C5534	A C 2A	IC4007	B C 2C	Q5502	B C 1B		
C511	B C 5A	C3502	A C 1A	C5535	A C 2A	IC4007	B C 5B	Q5503	B C 1B		
C512	B C 5A	C3503	A C 3C	C5536	A C 1A	IC4008	A C 2B	Q5504	B C 2A		
C513	B C 4A	C3504	A C 3C	C5537	A C 1A	IC4009	B C 1A	Q5505	B C 3A		
C2001	B C 2B	C3511	A C 3C	C5538	A C 1A	IC4012	A C 2A	Q6605	B C 3A		
C2002	B C 2B	C3518	A C 2B	C5539	A C 1A	IC4015	A C 2C	Q6607	B C 3A		
C2003	B C 2B	C3525	A C 3C	C5540	A C 1A	IC4101	A C 2A	Q6609	B C 3A		
C2004	B C 2B	C3526	A C 2C	C5541	A C 1A	IC4102	A C 2A	Q6610	B C 3A		
C2005	B C 2B	C3527	A C 2B	C5542	B C 2A	IC4103	A C 2A	Q6611	B C 3A		
C2006	B C 2B	C3528	A C 3C	C5543	B C 2A	IC4104	A C 2A	Q6612	B C 3A		
C2007	B C 2B	C3529	A C 2B	C5544	B C 2A	IC4105	A C 2A	Q6613	B C 3A		
C2008	B C 3B	C3530	A C 3B	C5545	B C 2A	IC4106	A C 2A	Q6614	B C 3A		
C2009	B C 3B	C4001	A C 3A	C5546	B C 1A	IC4107	A C 2A				
C2010	B C 3B	C4002	A C 2A	C5547	B C 1A	IC4109	A C 3A				
C2011	B C 3B	C4003	A C 3A	C5548	B C 1A	IC4501	A C 2B				
C2012	B C 3B	C4006	A C 2B	C5549	B C 2A	IC4502	A C 1C				
C2013	B C 2B	C4007	A C 2B	C5550	B C 1B	IC5001	B C 1A				
C2015	B C 2B	C4011	A C 3B	C5551	B C 2B	IC5002	B C 2A				
C2017	B C 3C	C4012	A C 3B	C5552	B C 1B	IC5003	B C 2A				
C2501	A C 4A	C4013	A C 3B	C5553	B C 1B	IC5004	B C 2A				
C2502	B C 4A	C4015	A C 2B	C5554	B C 1A	IC5005	A C 3A				
C2503	B C 4A	C4016	B C 2C	C5555	B C 1A	IC5006	A C 3A				
C2504	A C 4A	C4016	B C 5B	C5556	B C 1A	IC5007	A C 3A				
C2505	A C 4A	C4017	A C 2A	C5557	B C 1A	IC5008	A C 3A				
C2506	A C 4A	C4018	A C 2A	C5558	B C 1A	IC5009	B C 2B				
C2507	A C 4A	C4021	A C 3A	C5559	B C 2B	IC5501	A C 1A				
C2508	A C 4A	C4022	A C 3A	C5560	B C 1B	IC5503	A C 1B				
C2509	A C 4A	C4027	A C 2A	C5561	B C 2B	IC5504	B C 3A				
C2510	A C 4A	C4028	B C 2C	C5562	B C 1B	IC6601	B C 3A				
C2601	A C 4A	C4029	B C 1B	C5563	B C 1B	<b>COIL</b>					
C2602	A C 4A	C4030	B C 1B	C5564	B C 1B	L401	B C 5A				
C2603	A C 4A	C4101	A C 2A	C5566	B C 2B	L501	A C 5A				
C2604	A C 4A	C4102	A C 2A	C5567	B C 1B	L502	A C 5A				
C2605	A C 4A	C4103	A C 2A	C5568	B C 1B	L503	A C 5A				
C2606	A C 4A	C4104	A C 2A	C5569	B C 1A	L2001	B C 2C				
C2607	A C 4A	C4105	A C 2A	C5570	B C 1A	L2501	B C 4A				
C2608	A C 3A	C4501	A C 1C	C5571	B C 2B	L2502	B C 4A				
C3001	B C 2C	C4502	A C 1C	C5572	B C 2A	L2601	A C 3A				
C3002	B C 1B	C4503	A C 1B	C5573	B C 2A	L3001	B C 1C				
C3003	B C 2B	C4504	A C 1C	C5574	B C 2B	L3002	B C 1C				
C3004	B C 2B	C4505	A C 1B	C5575	B C 5B	L3003	B C 2C				
C3005	B C 1B	C4506	A C 1C	C5576	B C 5B	L3004	B C 1C				
C3006	B C 1B	C4507	A C 1C	C5577	B C 3A	L3501	A C 3C				
C3007	B C 1C	C4508	A C 1B	C6604	B C 3A	L3502	A C 1A				
C3008	B C 2C	C4509	A C 1B	C6605	B C 3A	L3503	A C 2C				
C3009	B C 1B	C4510	A C 1C	C6609	B C 3A	L3504	A C 2B				
C3010	B C 1C	C4511	A C 1B	C6610	B C 3A	L3505	A C 3C				
C3011	B C 2C	C5001	B C 2A	C6611	B C 3A	L3505	A C 3C				
C3012	B C 1C	C5002	B C 2A	C6612	B C 3A	L3506	A C 2C				
C3013	B C 2C	C5003	B C 2A	C6613	B C 3A	L3507	A C 3B				
C3014	B C 1C	C5004	B C 1A	<b>CONNECTOR</b>							
C3015	B C 1C	C5005	B C 2B	CN501	B C 4A	L4001	A C 3A				
C3016	B C 1C	C5006	B C 2B	CN502	B C 5A	L4002	A C 3B				
C3017	B C 2C	C5007	B C 2A	CN2001	B C 3B	L4003	B C 1B				
C3018	B C 1B	C5013	B C 2A	CN2002	B C 1B	L4501	A C 1C				
C3019	B C 1C	C5014	B C 2A	CN2501	B C 4A	L4502	A C 1B				
C3020	B C 2B	C5015	B C 2A	CN3001	A C 1B	L4503	A C 2B				
C3021	B C 1B	C5016	B C 1B	CN3002	B C 2C	L5001	B C 2A				
C3022	B C 2B	C5017	B C 1B	CN3003	A C 2C	L5002	B C 2A				
C3023	B C 2B	C5021	B C 1A	CN4001	B C 1A	L5003	B C 2B				
		C5022	B C 1A	CN5501	A C 2C	L5004	B C 1A				

COMPONENT PARTS LOCATION GUIDE <MAIN > YB10299-01-03

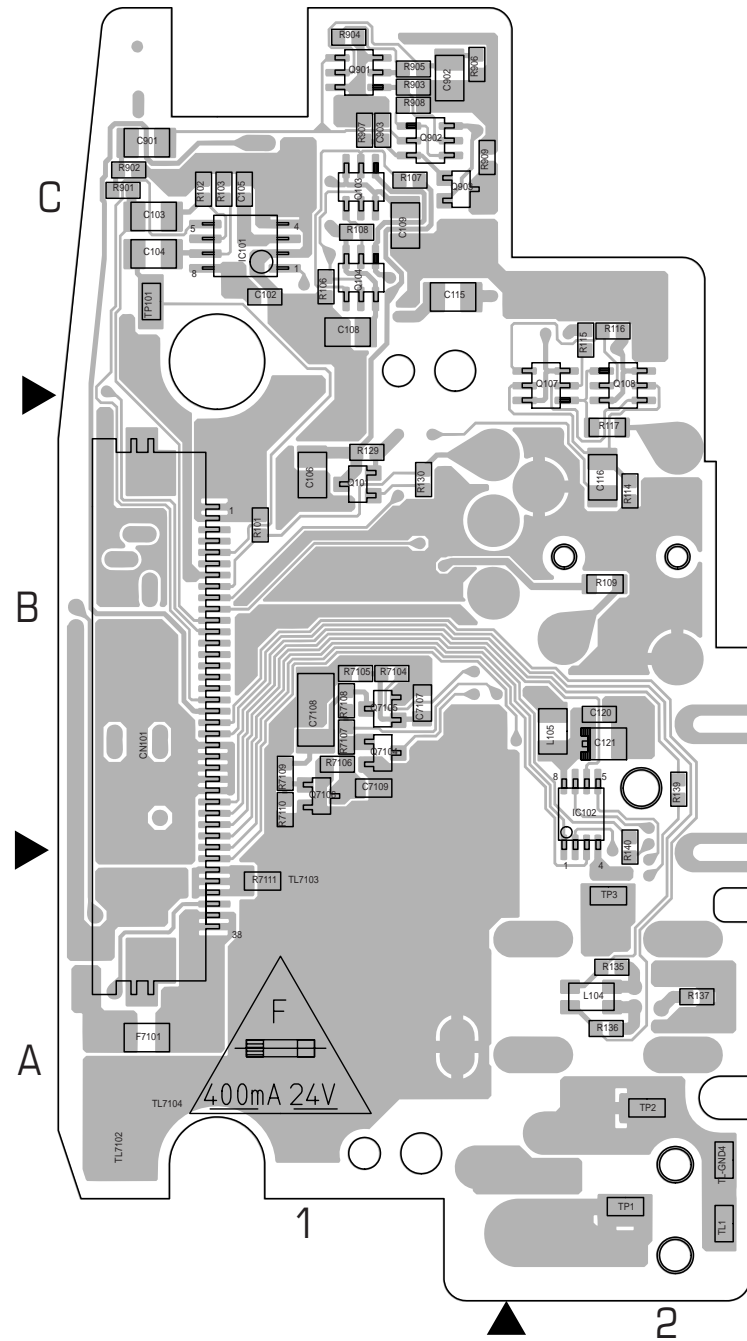
REF.NO.	LOCATION	REF.NO.	LOCATION	REF.NO.	LOCATION	REF.NO.	LOCATION	REF.NO.	LOCATION
<b>RESISTOR</b>		R3014	B C 1B	R4005	B C 2B	R4100	A C 3A	R5531	B C 1B
R405	A C 4A	R3015	A C 2A	R4006	B C 2B	R4101	A C 2A	R5532	B C 1B
R406	A C 4A	R3016	A C 2A	R4007	B C 2B	R4102	A C 2A	R5533	B C 1B
R407	A C 4A	R3017	A C 2A	R4008	A C 2C	R4103	A C 2A	R5534	B C 1B
R408	A C 4A	R3018	A C 2A	R4009	A C 2B	R4104	A C 2A	R5535	B C 1B
R409	A C 4A	R3019	A C 2A	R4010	A C 3A	R4105	A C 2A	R5537	A C 1B
R410	A C 5A	R3020	A C 3A	R4011	A C 3A	R4106	A C 2A	R5538	A C 2B
R411	A C 5A	R3021	A C 2A	R4012	A C 3A	R4107	A C 2A	R5539	A C 1B
R412	A C 5A	R3022	A C 2A	R4013	A C 3A	R4108	A C 2A	R5540	A C 1A
R413	A C 4A	R3023	A C 2A	R4014	B C 1E	R4184	A C 3A	R5541	A C 2A
R414	A C 5A	R3024	B C 2C	R4015	A C 2B	R4185	A C 2A	R5542	A C 2A
R415	A C 5A	R3025	A C 2A	R4016	A C 3A	R4188	A C 3B	R5543	A C 2A
R416	A C 5A	R3042	B C 2B	R4017	A C 2A	R4501	A C 1B	R5544	A C 1B
R417	B C 5B	R3043	B C 2B	R4018	A C 2A	R5001	B C 2A	R5546	B C 5A
R418	A C 4A	R3044	B C 2B	R4019	A C 3A	R5002	B C 2A	R5547	A C 1B
R419	A C 4A	R3045	B C 1B	R4020	A C 3A	R5003	B C 2A	R5548	A C 1B
R420	B C 5B	R3046	B C 1C	R4021	A C 2A	R5004	B C 2A	R5549	B C 3A
R421	B C 5B	R3047	B C 2C	R4022	A C 2A	R5005	B C 2A	R5550	B C 3A
R422	B C 5B	R3048	B C 2C	R4023	A C 2A	R5006	B C 2A	R6603	B C 3A
R423	B C 5B	R3049	B C 2C	R4024	B C 5A	R5007	B C 3A	R6609	B C 3A
R424	B C 5B	R3050	B C 2C	R4025	A C 3A	R5008	B C 3A	R6610	B C 3A
R425	B C 5B	R3051	B C 2C	R4026	A C 3A	R5009	B C 1B	R6612	B C 3A
R426	B C 5B	R3052	B C 2C	R4027	B C 1A	R5010	B C 5A	R6613	B C 3A
R427	B C 5B	R3053	B C 2C	R4028	A C 3A	R5012	B C 2A	R6617	B C 3A
R428	B C 5B	R3054	B C 2C	R4029	A C 3B	R5013	B C 5A	R6618	B C 3A
R502	B C 3A	R3055	B C 2C	R4030	A C 3B	R5014	B C 1B	R6621	B C 3A
R503	B C 3A	R3056	B C 2C	R4031	A C 3B	R5015	B C 2B	R6622	B C 3A
R504	B C 4A	R3057	B C 2C	R4032	A C 2B	R5016	B C 2A	R6623	B C 3A
R505	B C 4A	R3058	B C 2C	R4033	A C 2B	R5017	B C 1B	R6625	B C 3A
R506	B C 4A	R3059	B C 2C	R4034	A C 2B	R5018	B C 2A	R6626	B C 3A
R507	B C 4A	R3060	B C 2C	R4035	A C 2B	R5019	B C 2A	R6629	B C 3A
R508	B C 4A	R3061	B C 2C	R4036	A C 3B	R5020	B C 2A	RA2001	B C 2B
R509	B C 4A	R3072	B C 1B	R4037	A C 3B	R5040	B C 2B	RA2002	B C 2B
R510	B C 5A	R3073	B C 1B	R4038	A C 2B	R5041	B C 2B	RA5024	B C 2A
R511	B C 5A	R3074	B C 1B	R4039	B C 1A	R5042	B C 2A	RA5025	B C 2A
R512	B C 5A	R3075	B C 2C	R4040	B C 2A	R5044	B C 2B	RA5026	B C 1A
R513	B C 4A	R3076	B C 3A	R4041	B C 2A	R5046	B C 2B	RA5027	B C 1A
R514	B C 4A	R3077	B C 3B	R4042	B C 1A	R5047	B C 2B	RA5028	B C 1A
R515	B C 4A	R3078	B C 3B	R4043	B C 2A	R5048	B C 2B	RA5029	B C 2A
R516	B C 4A	R3114	B C 2B	R4044	A C 3A	R5049	B C 2B	<b>TEST POINT</b>	
R517	B C 4A	R3115	B C 1C	R4045	B C 1A	R5050	B C 2B	TP2002	B C 2B
R518	B C 4A	R3116	B C 1C	R4046	A C 2B	R5051	B C 2B	TP2601	A C 4A
R519	B C 4A	R3117	B C 1B	R4047	A C 3B	R5052	B C 2B	TP2602	A C 4A
R520	B C 4A	R3118	B C 2B	R4048	A C 2B	R5053	B C 2B	TP4001	A C 3A
R2001	B C 2B	R3119	B C 1B	R4049	A C 2B	R5054	B C 2B	TP4004	A C 3A
R2002	B C 2B	R3120	B C 2C	R4050	A C 2B	R5055	B C 1B	TP4005	A C 3A
R2003	B C 2B	R3121	B C 2C	R4051	B C 1B	R5056	B C 2A	TP4501	A C 1C
R2004	B C 3B	R3122	B C 2B	R4052	A C 3A	R5060	B C 2B	TP5001	B C 2A
R2005	B C 3B	R3123	B C 1B	R4055	A C 2B	R5061	B C 3B	TP5003	B C 2A
R2007	B C 2B	R3124	B C 1B	R4056	A C 2B	R5062	B C 3B	TP5004	B C 2A
R2008	B C 2B	R3125	B C 2B	R4057	A C 2A	R5063	B C 3A	TP5005	B C 2A
R2009	B C 2C	R3126	B C 2B	R4058	A C 1A	R5064	B C 3B	TP5006	B C 2A
R2011	B C 2C	R3127	B C 1B	R4059	A C 1A	R5065	B C 3B	TP5007	B C 2A
R2012	B C 3B	R3128	B C 2B	R4060	A C 2A	R5066	B C 3A	TP5008	B C 2A
R2013	B C 3B	R3129	B C 1B	R4061	A C 2A	R5067	B C 3A	TP5009	B C 2A
R2014	B C 3B	R3131	B C 2B	R4062	B C 3B	R5092	B C 1A	TP5501	A C 1A
R2015	B C 3B	R3176	B C 2C	R4063	B C 3B	R5094	B C 1A	TP5502	A C 1A
R2016	B C 3B	R3177	B C 2C	R4064	A C 3A	R5095	B C 1A	TP5503	A C 1A
R2017	B C 3B	R3178	B C 2C	R4065	A C 3A	R5096	B C 1B	TP5504	A C 1A
R2018	B C 3B	R3180	B C 1B	R4066	A C 3A	R5097	B C 5B	TP5505	A C 5A
R2019	B C 3B	R3181	B C 3C	R4067	A C 2A	R5098	B C 5B	TP5508	B C 1A
R2501	A C 3A	R3182	B C 3C	R4068	B C 5B	R5154	B C 2A	TP5515	B C 1A
R2502	A C 3A	R3183	B C 3C	R4069	A C 3A	R5155	B C 2A	TP5516	B C 1A
R2503	A C 3A	R3184	B C 1B	R4070	B C 5B	R5158	B C 2A	TP5518	B C 1B
R2504	A C 4A	R3198	B C 2B	R4071	A C 2A	R5159	B C 5A	TP5520	B C 1B
R2505	A C 4A	R3199	B C 2B	R4072	A C 3A	R5160	B C 2A	TP5521	B C 2B
R2506	A C 4A	R3200	B C 2B	R4073	B C 5B	R5268	B C 1B	<b>OTHER</b>	
R2507	A C 4A	R3201	B C 2B	R4074	B C 5B	R5501	A C 2B	TL2002	B C 3B
R2508	A C 4A	R3202	B C 2B	R4075	A C 3A	R5502	A C 1B	TL3001	B C 2C
R2509	A C 4A	R3203	B C 2B	R4076	A C 3A	R5503	A C 5A	TL3002	B C 2C
R2510	A C 3A	R3204	B C 2B	R4077	A C 2C	R5504	B C 3A	TL3009	B C 1C
R2511	A C 3A	R3205	B C 2B	R4078	A C 2C	R5506	A C 2B	TL3015	B C 1B
R2512	A C 4A	R3206	B C 2B	R4079	A C 2C	R5510	A C 1A	TL3017	B C 1B
R2602	A C 4A	R3207	B C 2C	R4080	A C 2C	R5511	B C 3A	TL3510	A C 2A
R2603	A C 3A	R3249	B C 2B	R4081	B C 1B	R5512	B C 3A	TL5501	B C 5A
R2604	A C 3A	R3250	B C 2B	R4082	A C 2C	R5513	A C 1A	TL5502	B C 1B
R2605	A C 4A	R3272	B C 2B	R4083	A C 3B	R5514	A C 1A	TL-L3.3	B C 1C
R2606	A C 3A	R3273	B C 2B	R4084	A C 3B	R5515	A C 1A	TL-LGND	B C 1C
R2609	A C 3A	R3295	B C 2B	R4085	A C 3A	R5516	A C 1A	TL-LHDY	B C 3C
R2610	A C 4A	R3296	B C 2B	R4086	B C 1A	R5516	B C 3A	X3001	B C 2C
R3001	B C 2B	R3297	B C 2B	R4087	B C 1A	R5517	A C 1A	X3002	B C 1B
R3002	B C 2B	R3503	A C 2A	R4088	B C 2A	R5520	A C 1A	X4002	A C 2B
R3003	B C 1B	R3504	B C 1C	R4089	B C 2A	R5521	A C 1A	X4003	A C 3B
R3007	B C 2B	R3505	B C 1C	R4090	B C 2A	R5522	B C 2A	X4004	A C 2C
R3008	B C 1B	R3506	B C 1C	R4091	B C 2A	R5523	B C 2B		
R3009	A C 2A	R3507	B C 1C	R4092	B C 2A	R5524	B C 2B		
R3010	A C 2A	R3508	B C 1C	R4093	B C 2A	R5524	B C 2B		
R3011	B C 1B	R4001	B C 1A	R4094	B C 2A	R5525	B C 2B		
R3012	A C 3A	R4002	A C 4A	R4095	A C 3A	R5526	B C 2B		
R3013	B C 2B	R4003	A C 2C	R4096	A C 3A	R5527	B C 2B		
		R4004	B C 1B	R4097	A C 3A	R5528	B C 2A		
				R4098	A C 3A	R5529	B C 2A		
				R4099	A C 3A	R5530	B C 1B		



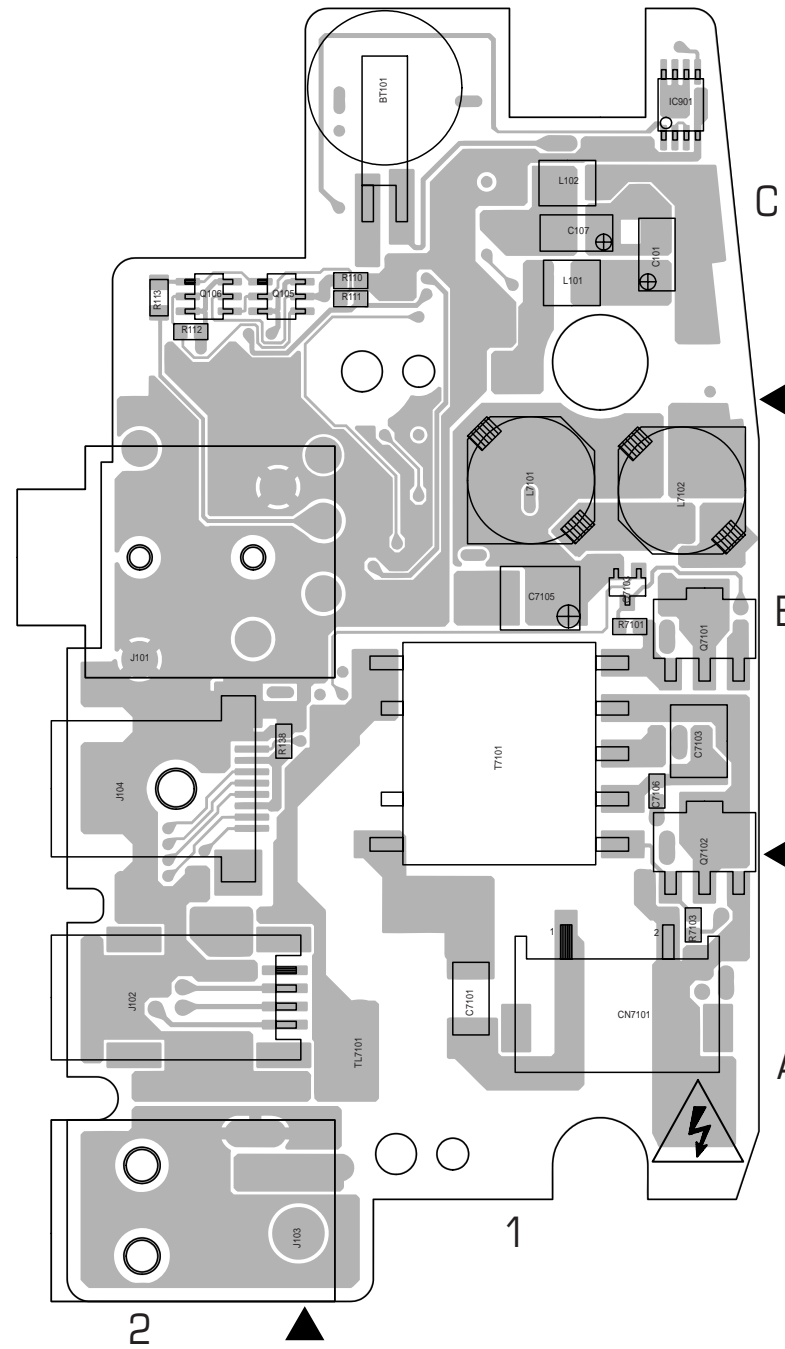




FOIL SIDE (B)



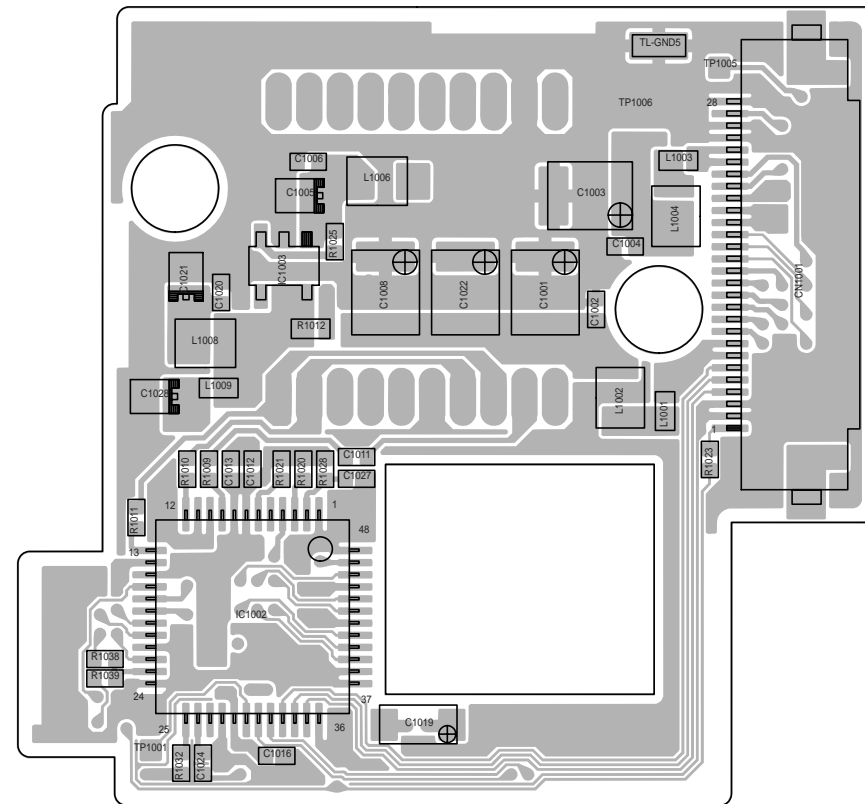
COMPONENT SIDE (A)



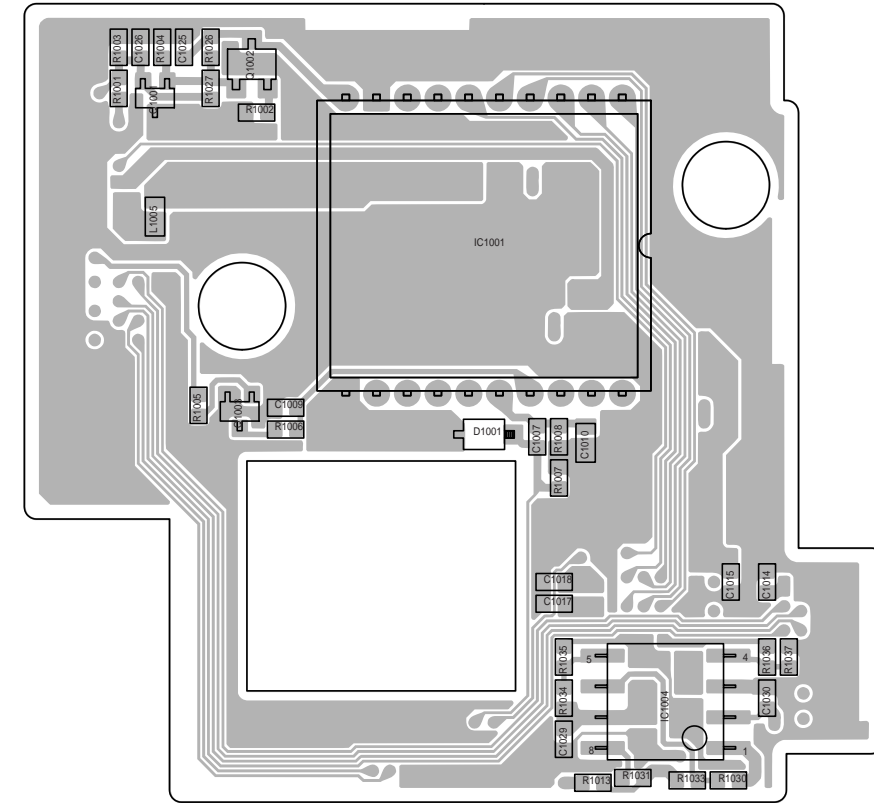
COMPONENT PARTS LOCATION GUIDE <JACK> YB10300-01-02

REF.NO.	LOCATION	REF.NO.	LOCATION	REF.NO.	LOCATION	
<b>CAPACITOR</b>			L7102	A C 1B	R138	A C 2B
C101	A C 1C	<b>TRANSISTOR</b>			R139	B C 2B
C102	B C 1C	Q101	B C 1B	R140	B C 2B	
C103	B C 1C	Q103	B C 1C	R901	B C 1C	
C104	B C 1C	Q104	B C 1C	R902	B C 1C	
C105	B C 1C	Q105	A C 2C	R903	B C 1C	
C106	B C 1B	Q106	A C 2C	R907	B C 1C	
C107	A C 1C	Q107	B C 2C	R908	B C 1C	
C108	B C 1C	Q108	B C 2C	R909	B C 1C	
C109	B C 1C	Q902	B C 1C	R7101	A C 1B	
C115	B C 1C	Q903	B C 1C	R7103	A C 1A	
C116	B C 2B	Q7101	A C 1B	R7104	B C 1B	
C120	B C 2B	Q7102	A C 1B	R7105	B C 1B	
C121	B C 2B	Q7103	A C 1B	R7106	B C 1B	
C901	B C 1C	Q7104	B C 1B	R7107	B C 1B	
C903	B C 1C	Q7105	B C 1B	R7108	B C 1B	
C7101	A C 1A	Q7106	B C 1B	R7109	B C 1B	
C7103	A C 1B			R7110	B C 1A	
C7105	A C 1B	<b>RESISTOR</b>			R7111	B C 1A
C7106	A C 1B	R101	B C 1B	<b>TEST POINT</b>		
C7107	B C 1B	R102	B C 1C	TP1	B C 2A	
C7108	B C 1B	R103	B C 1C	TP2	B C 2A	
C7109	B C 1B	R106	B C 1C	TP3	B C 2A	
CN101	B C 1B	R107	B C 1C	TP101	B C 1C	
<b>CONNECTOR</b>			R108	B C 1C	<b>OTHER</b>	
CN7101	A C 1A	R109	B C 2B	BT101	A C 1C	
<b>IC</b>			R110	A C 1C	F7101	B C 1A
IC101	B C 1C	R111	A C 1C	J101	A D 2B	
IC102	B C 1C	R112	A C 2C	J102	A C 2A	
IC901	A C 1C	R113	A C 2C	J103	A D 2A	
<b>COIL</b>			R114	B C 2B	J104	A C 2B
L101	A C 1C	R115	B C 2C	T7101	A C 1B	
L102	A C 1C	R116	B C 2C	TL1	B C 2A	
L104	B C 2A	R117	B C 2B	TL7101	A D 1A	
L105	B C 2B	R129	B C 1B	TL7102	B C 1A	
L7101	A C 1B	R130	B C 1B	TL7103	B C 1A	
		R135	B C 2A	TL7104	B C 1A	
		R136	B C 2A	TL-GND4	B C 2A	
		R137	B C 2A			

FOIL SIDE (B)



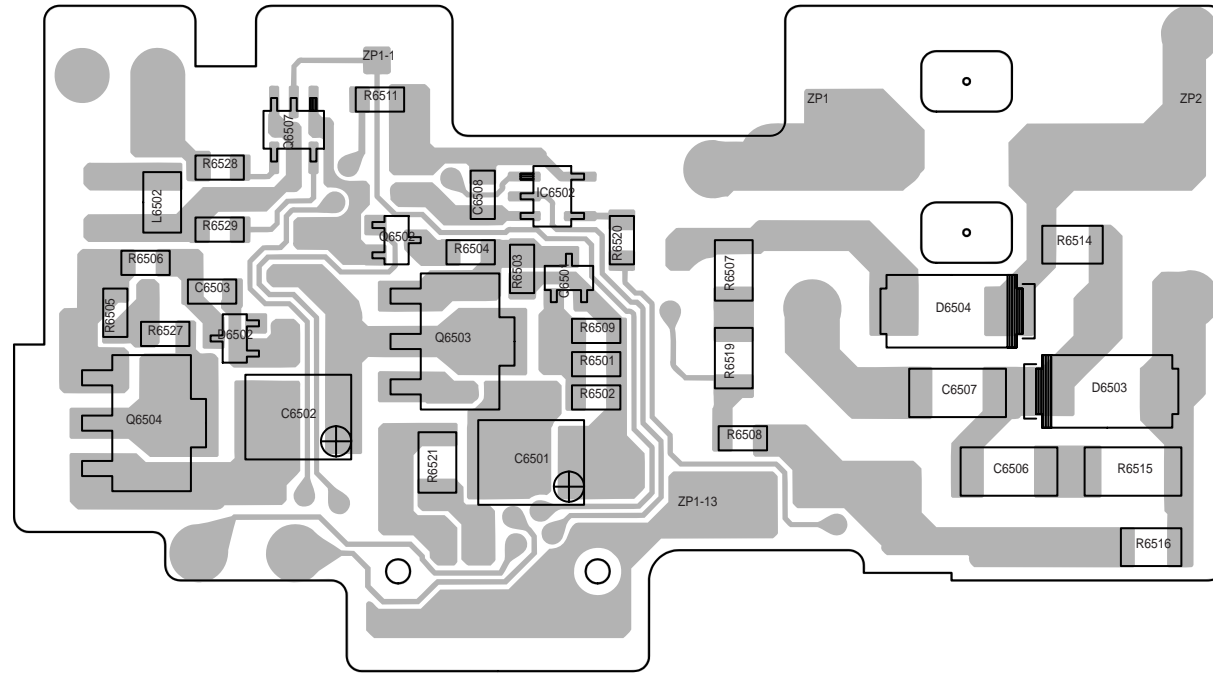
COMPONENT SIDE (A)



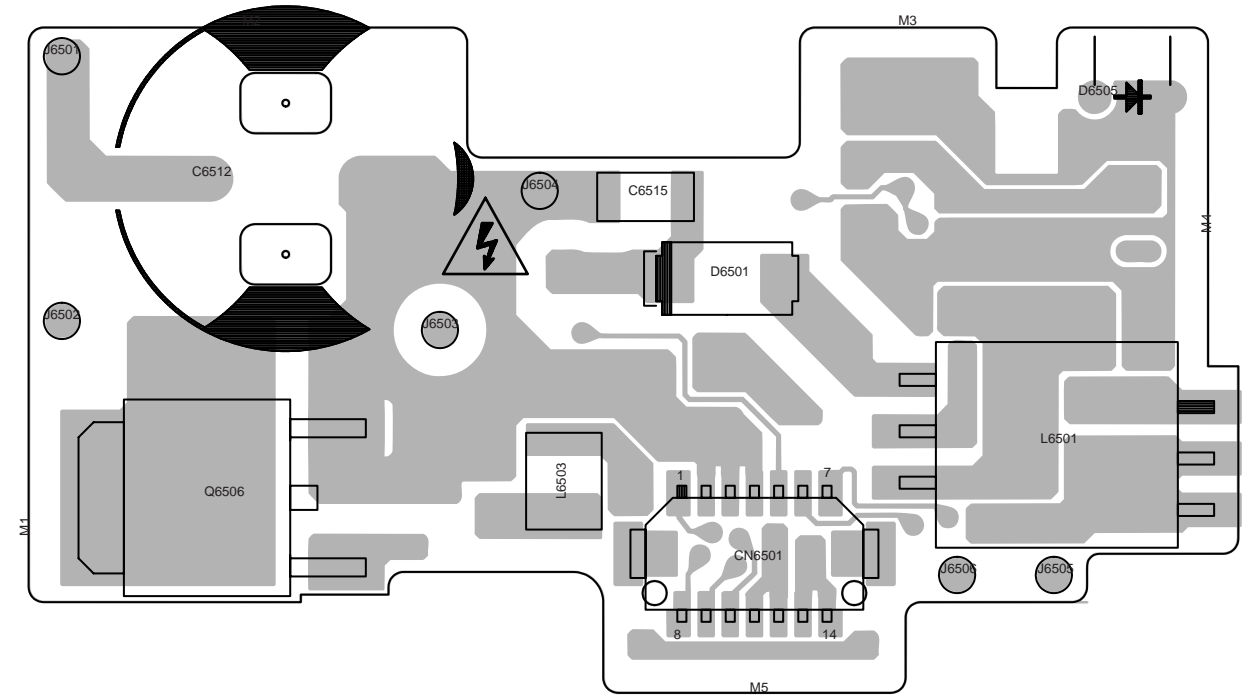
02 CCD PWB YB10300-01-02

3.16 STROBE FLASH CIRCUIT BOARD

FOIL SIDE (B)



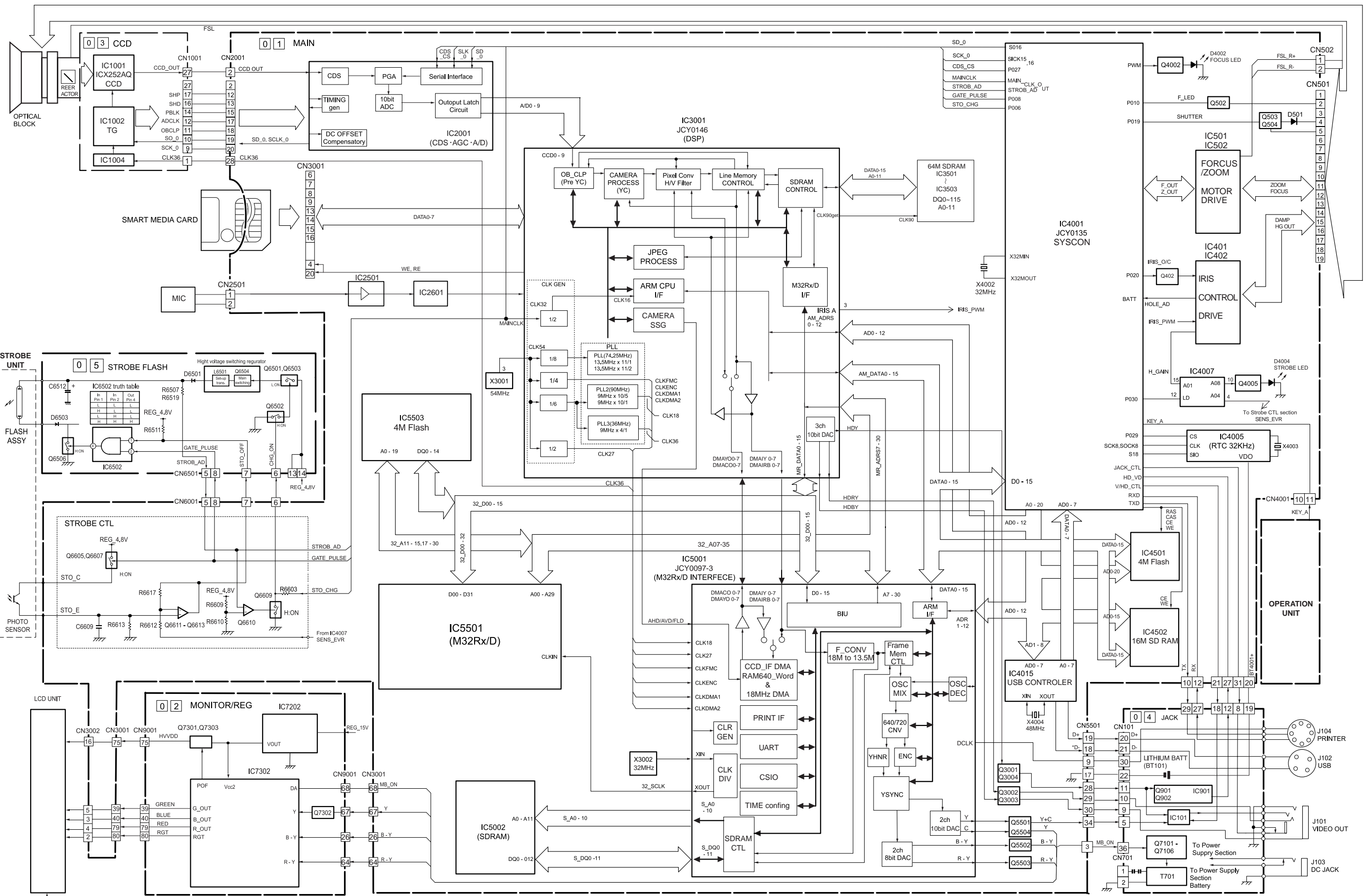
COMPONENT SIDE (A)



05 STROBE FLASH PWB YB10300-01-02

3.17 OVER ALL BLOCK DIAGRAM

5  
4  
3  
2  
1



A B C D 3-33 3-34 E F G H